

The Ride Along

ENOA Rural Transportation Program Newsletter | July 2022

Eastern Nebraska Office on Aging | 4780 South 131st St. | Omaha, NE 68137 | enoa.org

Food/Drinks on the Vans

Food is not allowed to be eaten on the vans. You may bring a drink onto the van ONLY if it has a lid. Any cups or bottles without lids will not be allowed on the vans.

Handbooks

It's time to distribute the 2022-2023 Rural Transportation Passenger Handbooks. Every current and new passenger will receive a handbook and will be required to sign and return the first page. There may be a few minor changes to some of our policies, so be sure to read through the entire book.



We're Hiring!

We have an open position for a substitute van driver. This position would be on an as-needed basis, and will be utilized when there is not enough coverage of routes due to illness, or vacation, etc. If you know of anyone who might be interested, have them visit our website at www.enoa.org.

Scheduling Rides

When scheduling a ride, it is better to overestimate how much time you need than it is to underestimate. When you don't allow enough time, and an appointment runs longer than scheduled, it disrupts the timing of the drivers' routes. This can lead to other passengers being late to their appointments, and drivers not finishing their day on time. It's best for you to allow extra time and possibly wait on us, rather than not allowing enough time and having us wait on you. Our policy states that our drivers are only allowed to wait 15 minutes past the scheduled return time, then they may have to continue on their routes, and you could be at risk of becoming responsible for finding alternate transportation home. For detailed information, please see your passenger handbook under "Scheduling Rides".

Happy Birthday!

We have four birthdays to celebrate this quarter!

Deidra's birthday is July 6th

Dwight's is July 10th

Murray's is July 16th

Ron's is August 5th

Be sure to wish them well on their special days!

Beat the Heat

It's the hottest time of the year and heat related illnesses can happen very quickly when the temperatures are high. Remember to stay cool, stay hydrated, and stay informed.

For more information, visit <https://www.cdc.gov/disasters/extremeheat/heattips.html>

Rural 
Transportation
 Program

Comments/suggestions/questions?
Please let us know!

2022 Holiday Schedule

We will be closed on the following holidays during 2022:

Independence Day ObservanceMonday July 4, 2022

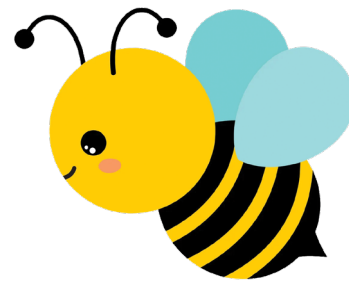
Labor Day MondaySeptember 5, 2022

Veteran's Day FridayNovember 11, 2022

Thanksgiving DayThursday November 24, 2022

Thanksgiving DayObservance Friday November 25, 2022

Christmas Day ObservanceMonday December 26, 2022



**BE THE
DIFFERENCE**

Honey, it's worth it!



**Report Abuse and
Neglect of the Elderly
or
Vulnerable Adults**

Call **1-800-652-1999**

Nebraska Adult
Protective Services



*Calls can be made anonymously



Rural Transportation

We'll steer you in the right direction!

